



SAFE STRONG SUPPORTIVE

casey family programs

Working
Together to
Ensure Safe
Children &
Supportive
Communities

Casey Family Programs

- The nation's largest operating foundation focused on safely reducing the need for foster care and building Communities of Hope for children & families.
- We work to influence long-lasting improvements to the safety and success of children, families and the communities where they live.

Casey Family Programs

- Every child should grow up in a safe, supportive and permanent family
- Every family should have access to the support of a strong and caring community
- Every community should determine how to create hope and opportunities for its children and families in need
- Everyone has a role to play in building communities of hope for all children

Working Toward Hope

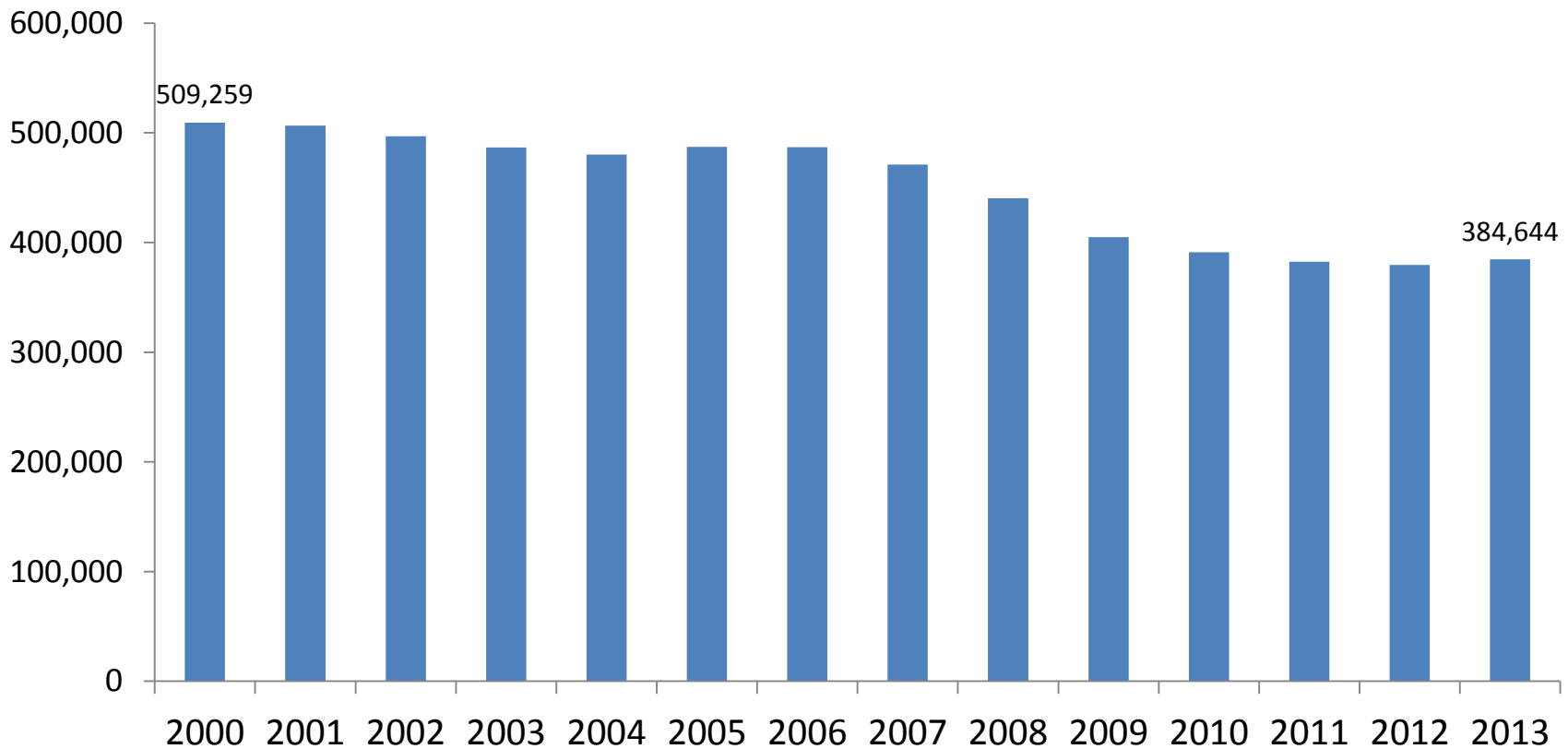
2020: Building Communities of Hope

- Reducing the number of children in foster care by 50% by the year 2020
- Reinvesting the savings into building stronger more supportive communities and systems
- Improving outcomes in education, employment, and mental health

From Casey Family Programs' 2020 Strategy: A Vision for America's Children

- The act of removing children from their families and homes creates emotional distress and long-lasting traumas that should be avoided whenever possible.
- We have learned over the years that some vulnerable children can be better served by remaining safe at home while their parents receive the community services and support they need to raise a family successfully.
- The goal in child welfare should be to make sure that children who do not need to be in foster care are not in foster care.

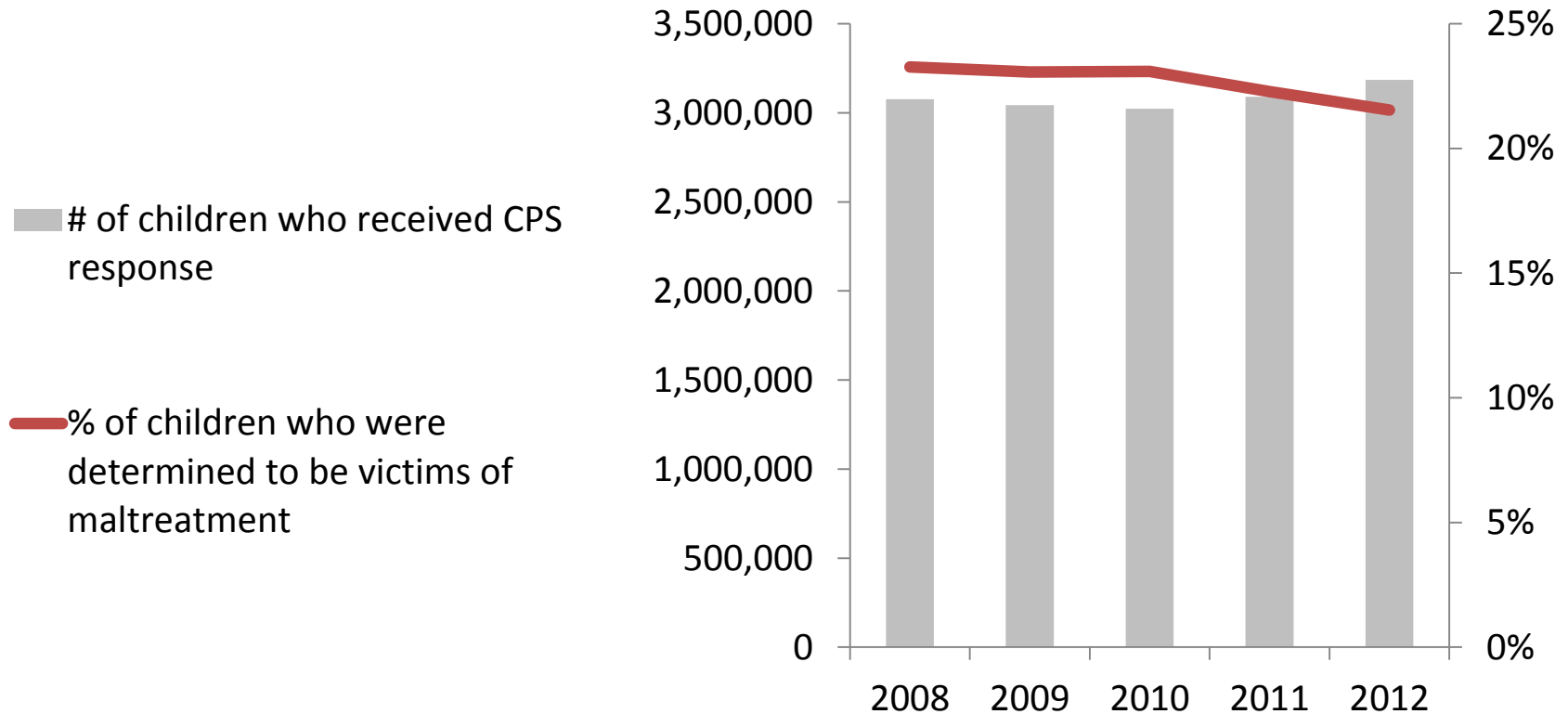
In 2000 there were 509,259 kids in foster care*.
On September 30, 2013, there were
384,644 children* in care - a 24.5% reduction since 2000.



* Under age 18

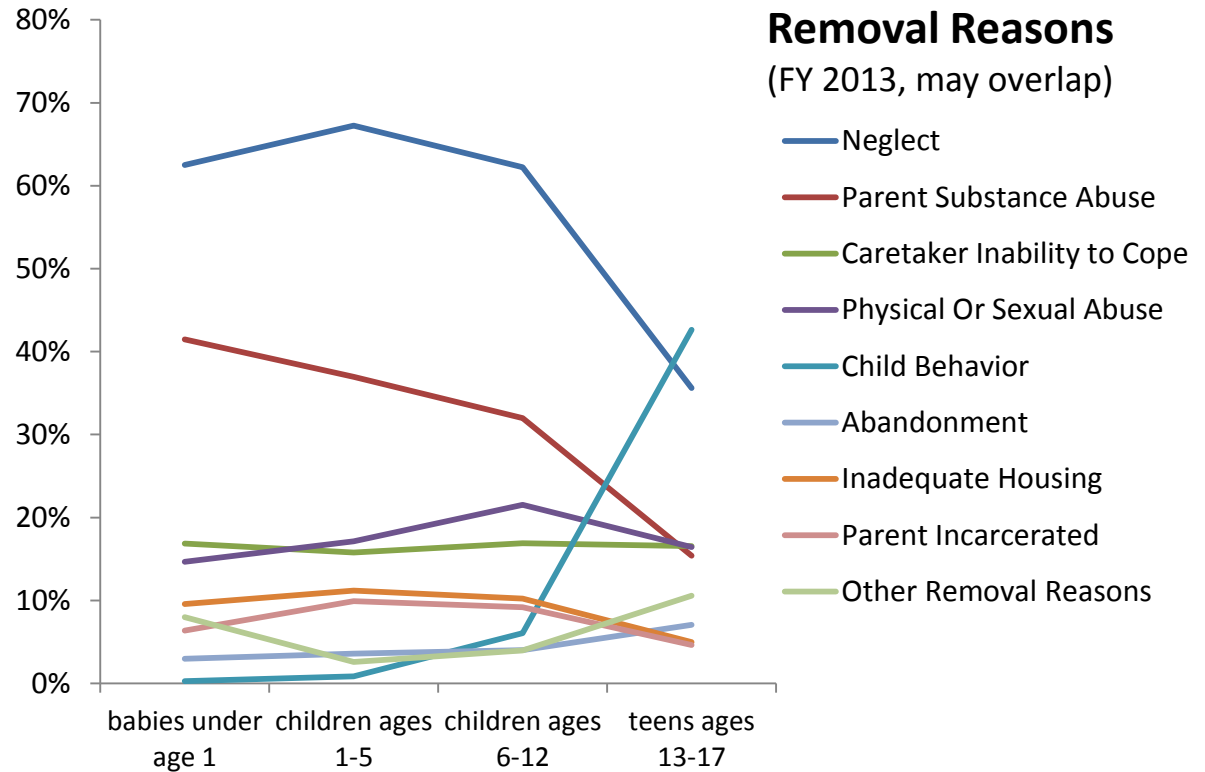
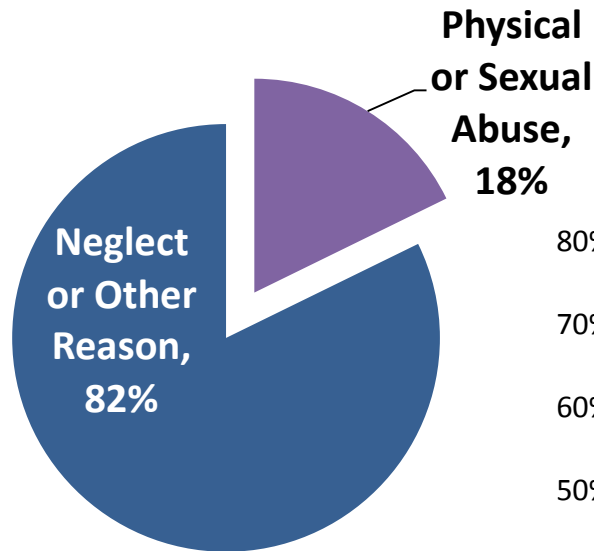
Annually, 3,184,000 children received a CPS response (unique count)

22% of these children were determined to be victims of maltreatment



Data based on national estimates from Child Maltreatment 2012

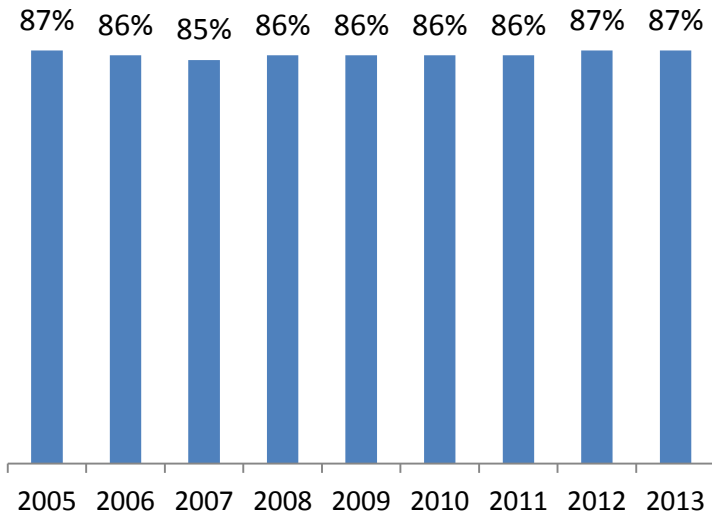
Children enter care for a variety of reasons.



In 2013...

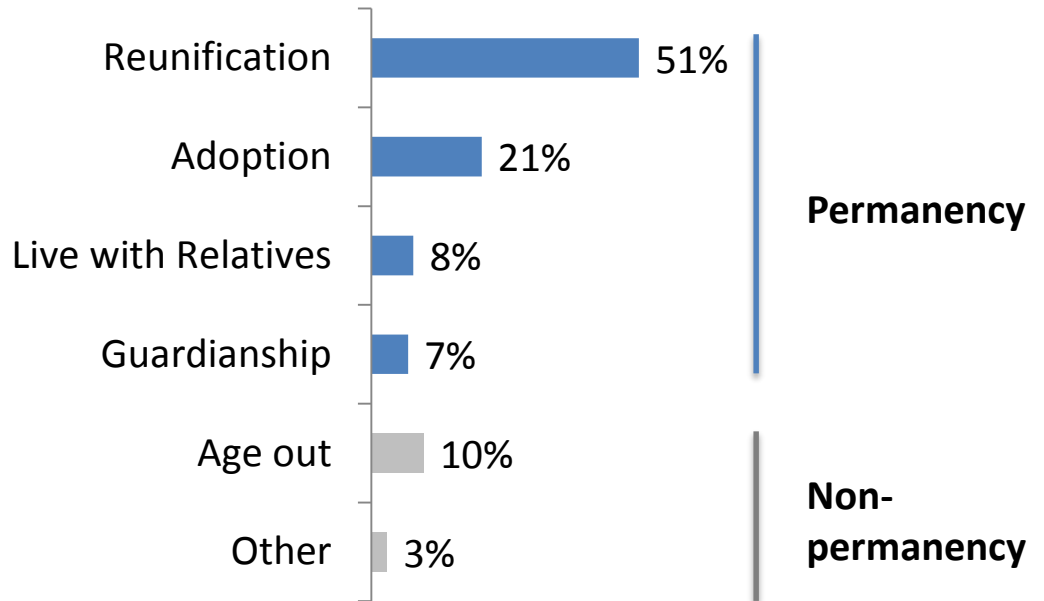
238,280 children left care

Most children leaving care do achieve permanency.



Permanency can take many forms.

(FY13, Children exiting by type)



Communities *of* Hope

ACROSS AMERICA



Evidence of Hope

Outcome: Influence outcome-enhancing changes to federal, state and local public policy

- Federal legislation
 - Fostering Connections to Success and Increasing Adoptions Act of 2008
 - Child and Family Services Improvement and Innovations Act of 2011
 - Protect Our Kids Act of 2012
 - 2012 Amendment to the Family Educational Rights and Privacy Act (FERPA)
 - Preventing Sex Trafficking and Strengthening Families Act of 2014

The Challenge

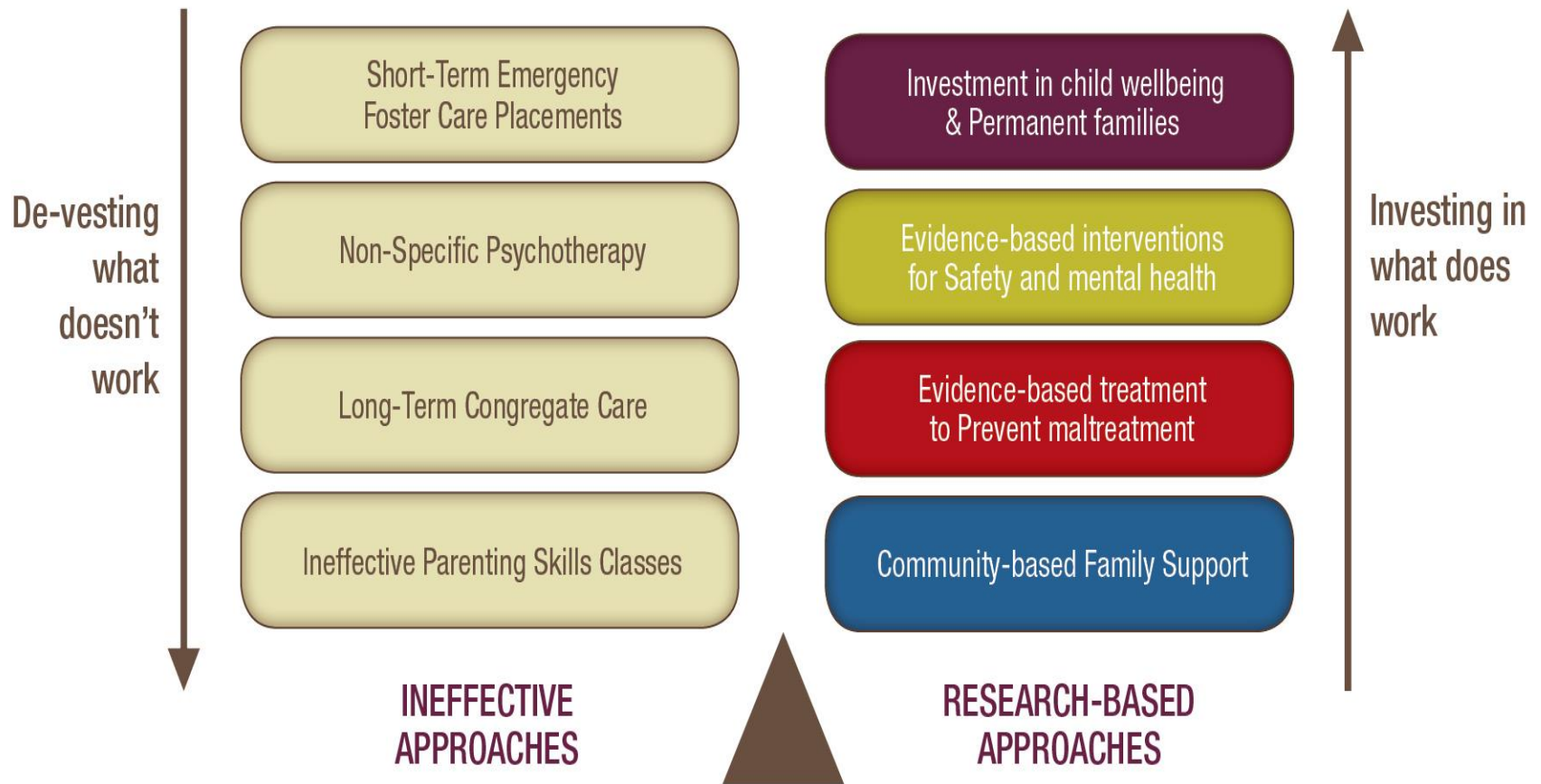
The major federal funding source for foster care is **not aligned** with good practice or outcomes

- It is triggered when a child **enters out-of-home care**
- It is tied to an outdated eligibility program
- It does not promote the integration of well-being with work to promote **safety** and **permanency**.

Aligning Child Welfare Funding With Results

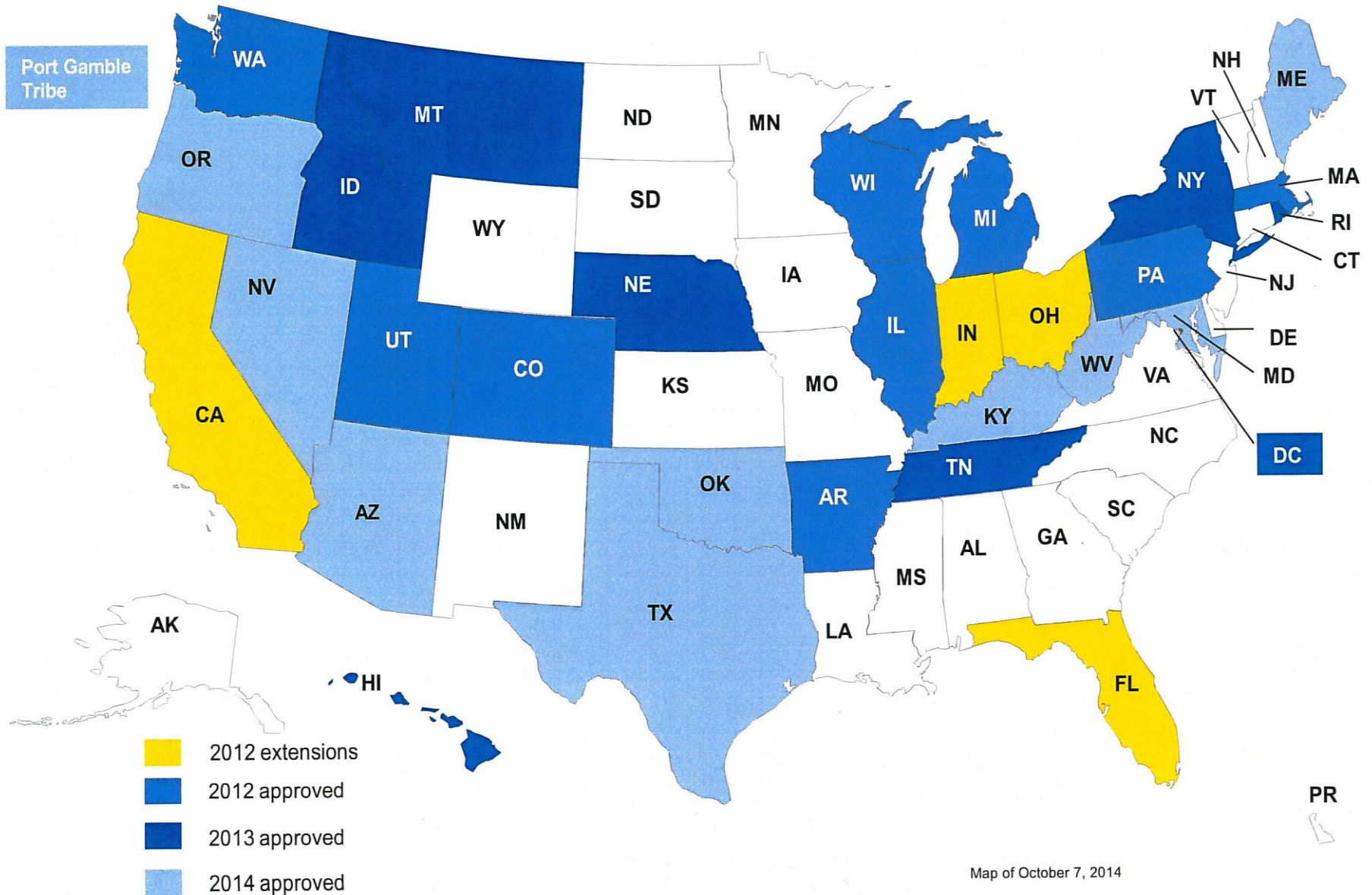
- The child welfare agency is just one piece of the child welfare system.
- Federal funding silos tie the hands of both the child welfare agency and the child welfare system.
 - Funding influences what the system offers vulnerable children and families.
 - Availability of needed services will impact decisions regarding what is in the best interest of a child.
 - Year to year budgeting offers no predictability.

Shifting Resources to **Support What Works**



Investing savings to bridge from ineffective to effective practices

2012/2013 Waiver Approvals



- 2012 extensions
- 2012 approved
- 2013 approved
- 2014 approved

Not doing Waiver

Map of October 7, 2014

Recommended Areas of Focus

1. Actively participate in the governance and oversight of your child welfare system
2. Define what success looks like for you in your state and community
3. Align work with stated outcomes
4. Evaluate your state's workforce and workforce turnover

Evaluating Successful Social Work

- How closely are objectives aligned with desired outcomes? Do the accountability measures required of an agency actually increase the time that social workers spend away from families?
- Are there opportunities identified for social workers to team with other professionals?

Evaluating Successful Social Work – Strategies to Consider

- Is there a stated definition of success for social workers and is it aligned with their values of helping children and families?
- Do we use data to identify who is at risk?
- Do we create policy based on what works for those at risk?

Community Response

- A community's response should not be limited to its child protection agency
- Other agencies including health, mental health, domestic violence, substance abuse, law enforcement are critical.
- Child Protection can't do it alone and you can demand that agencies work together.



SAFE STRONG SUPPORTIVE

casey family programs

2020:
Building
Communities
of Hope