



SAFE STRONG SUPPORTIVE

casey family programs

Working
Together to
Ensure Safe
Children &
Supportive
Communities

Casey Family Programs

- The nation's largest operating foundation focused on safely reducing the need for foster care and building Communities of Hope for children & families.
- We work to influence long-lasting improvements to the safety and success of children, families and the communities where they live.

Casey Family Programs

- Every child should grow up in a safe, supportive and permanent family
- Every family should have access to the support of a strong and caring community
- Every community should determine how to create hope and opportunities for its children and families in need
- Everyone has a role to play in building communities of hope for all children

Working Toward Hope

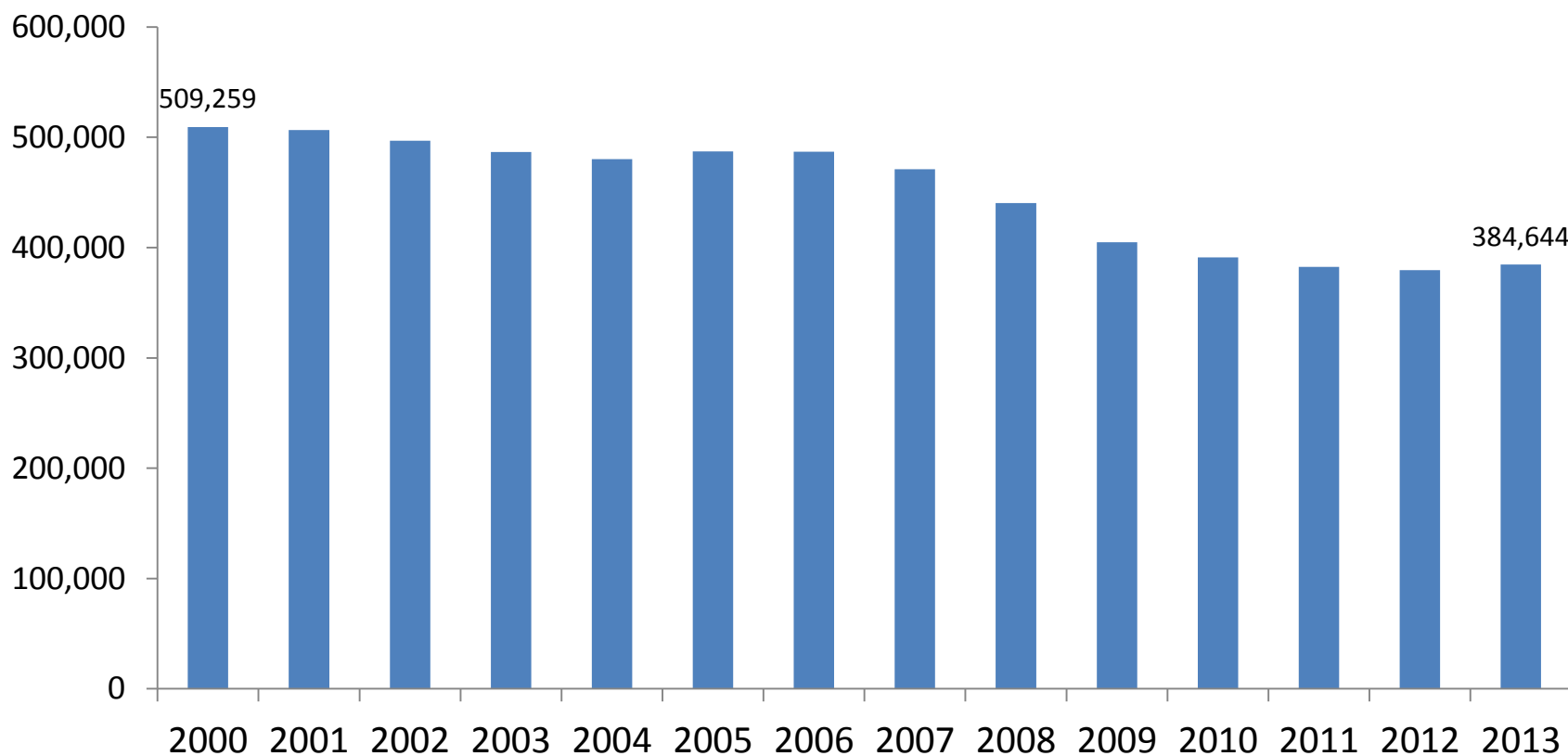
2020: Building Communities of Hope

- Safely reducing the number of children in foster care by 50% by the year 2020
- Reinvesting the savings into building stronger more supportive communities and systems
- Improving outcomes in education, employment, and mental health

From Casey Family Programs' 2020 Strategy: A Vision for America's Children

- The act of removing children from their families and homes creates emotional distress and long-lasting traumas that should be avoided whenever possible.
- We have learned over the years that some vulnerable children can be better served by remaining safe at home while their parents receive the community services and support they need to raise a family successfully.
- The goal in child welfare should be to make sure that children who do not need to be in foster care are not in foster care and that every child is connected to a permanent, lifelong family.

In 2000 there were 509,259 kids in foster care*.
On September 30, 2013, there were
385,000 children* in care - a 25% reduction since 2000.

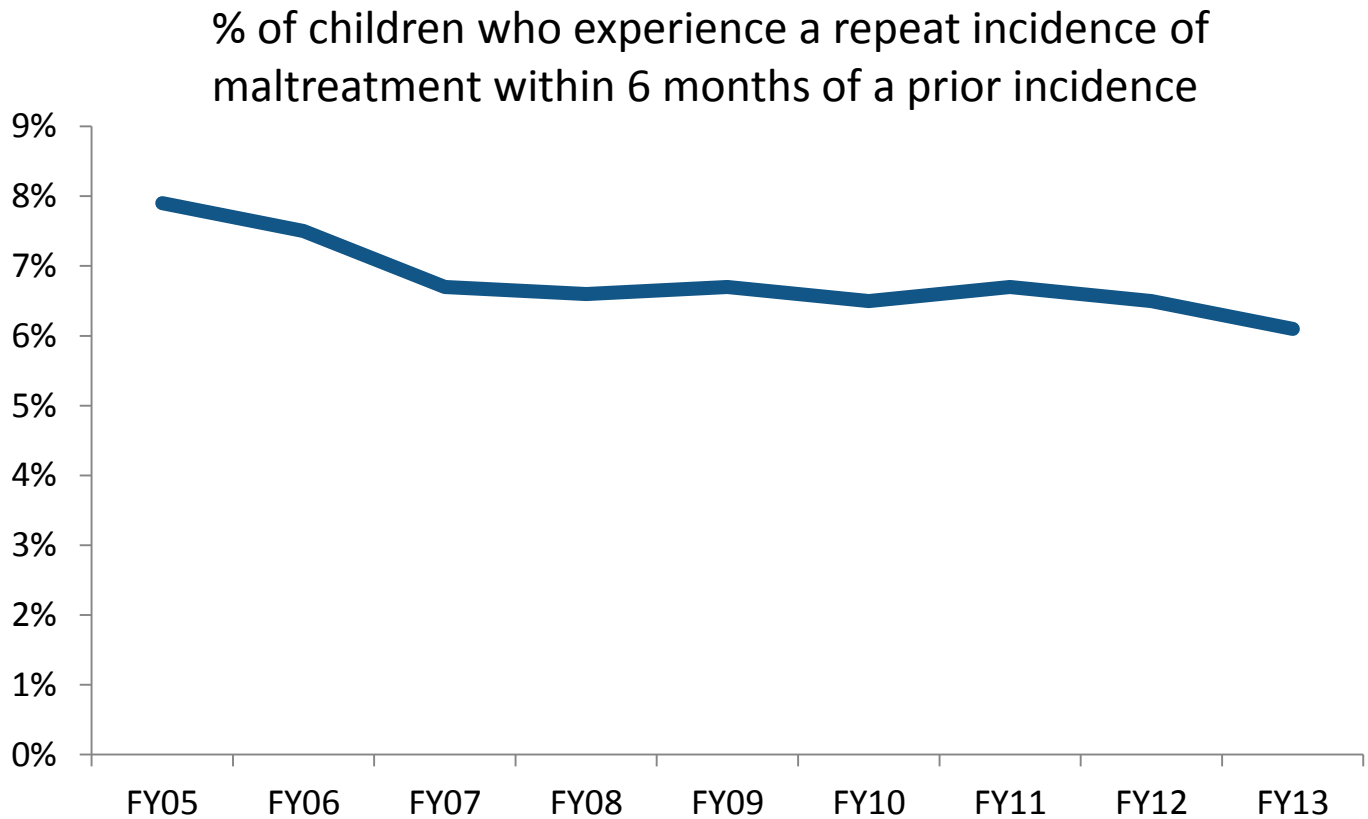


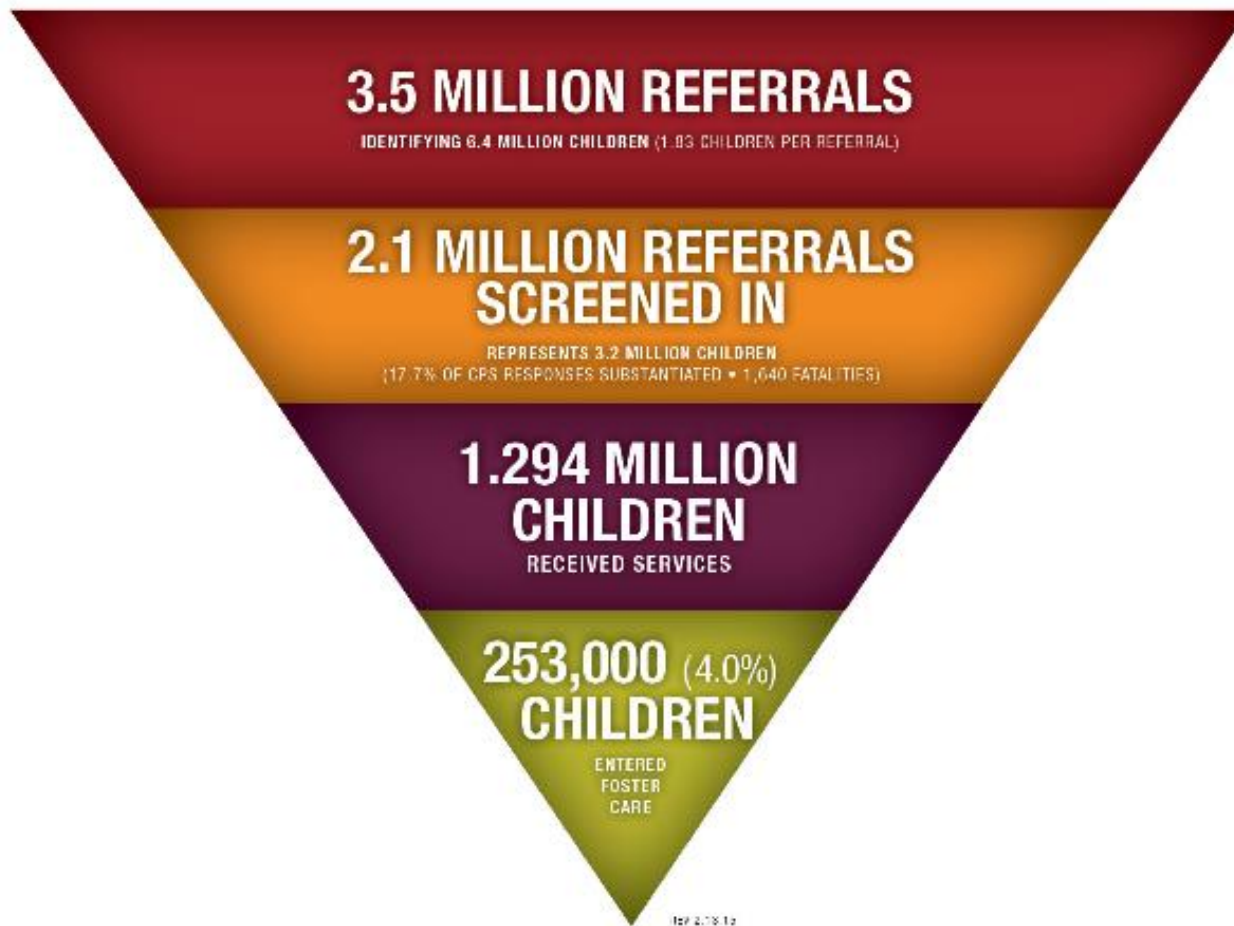
Data source: The AFCARS Report 2013

* Under age 18

casey family programs | casey.org

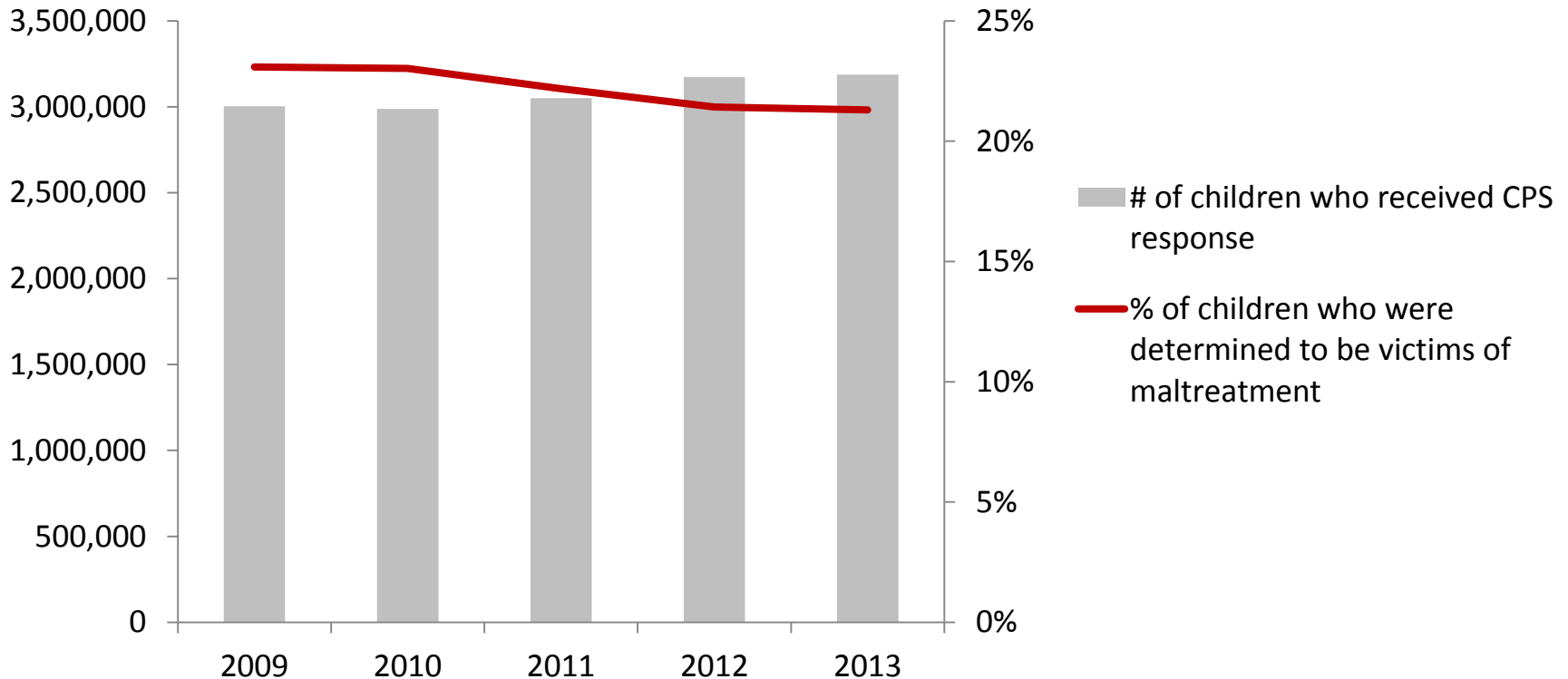
Recurrence of maltreatment is a **key indicator of safety** which has show improvement during period of reduction.



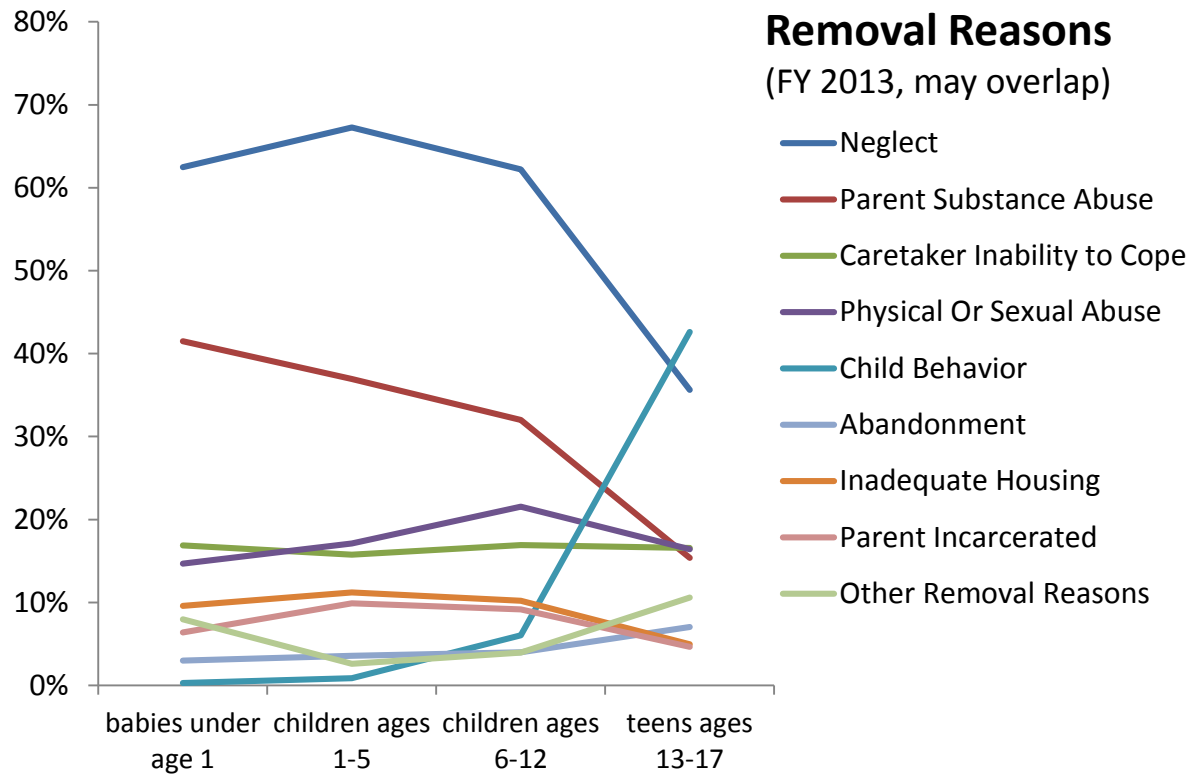
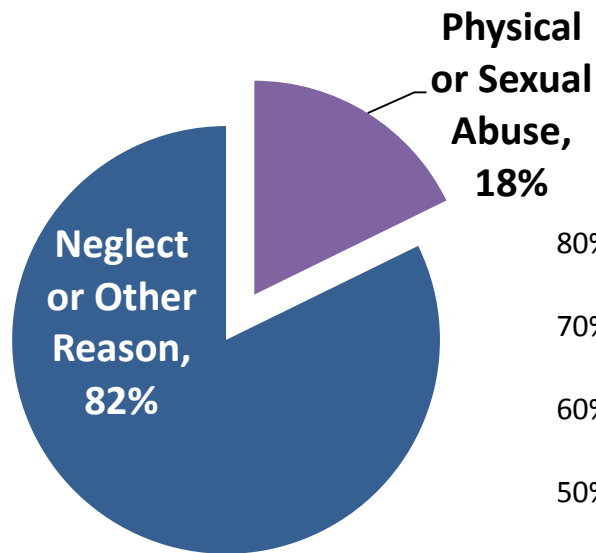


Annually, 3,188,085 children received a CPS response (unique count)

21% of these children were determined to be victims of maltreatment



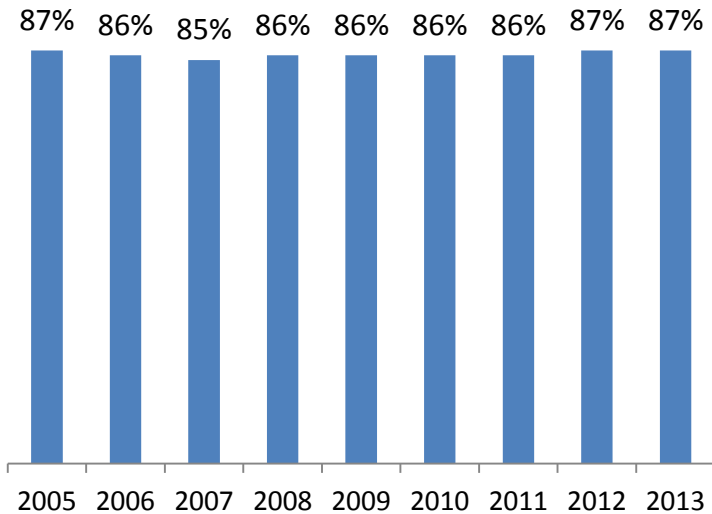
Children enter care for a variety of reasons.



In 2013...

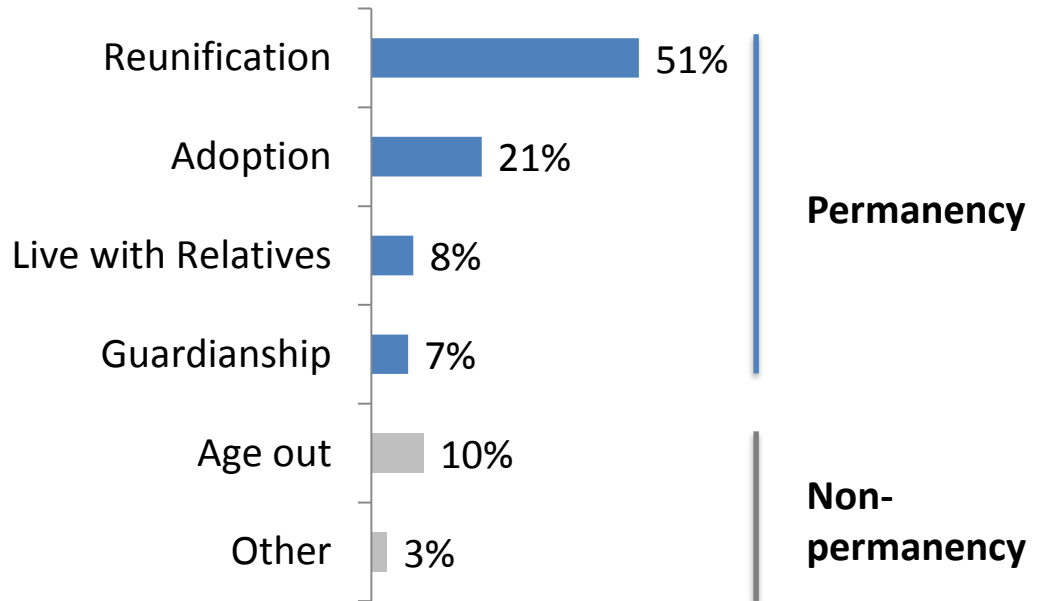
238,280 children left care

Most children leaving care do achieve permanency.



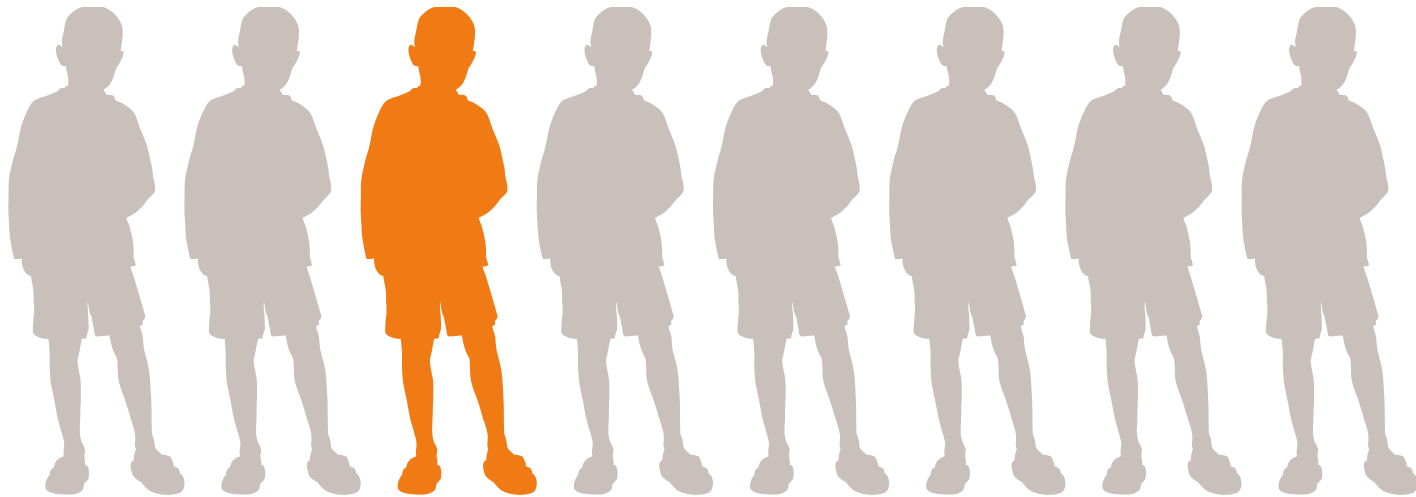
Permanency can take many forms.

(FY13, Children exiting by type)



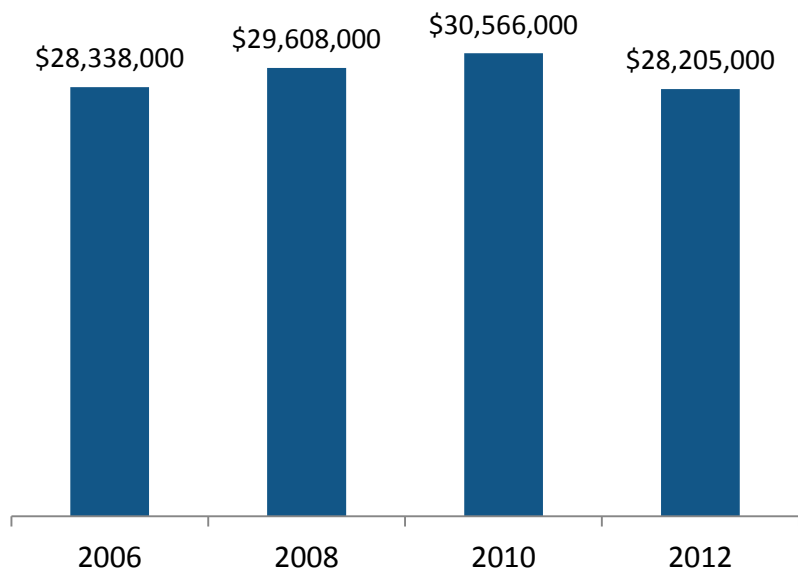
The **universe of children *at risk*** is **bigger** than the standard child welfare data suggests.

1 in 8 children (12.5%) have been a confirmed victim by age 18

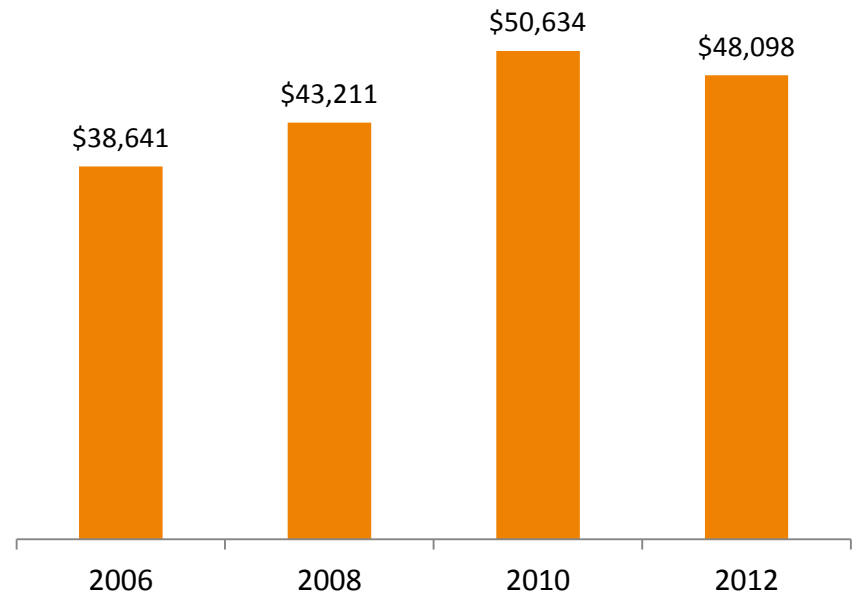


Funding amount and structure plays a key role in effectively and appropriately serving children & families.

Total child welfare spending
(dollars adjusted to 2012)



Child welfare spending per child served in care



The Challenge

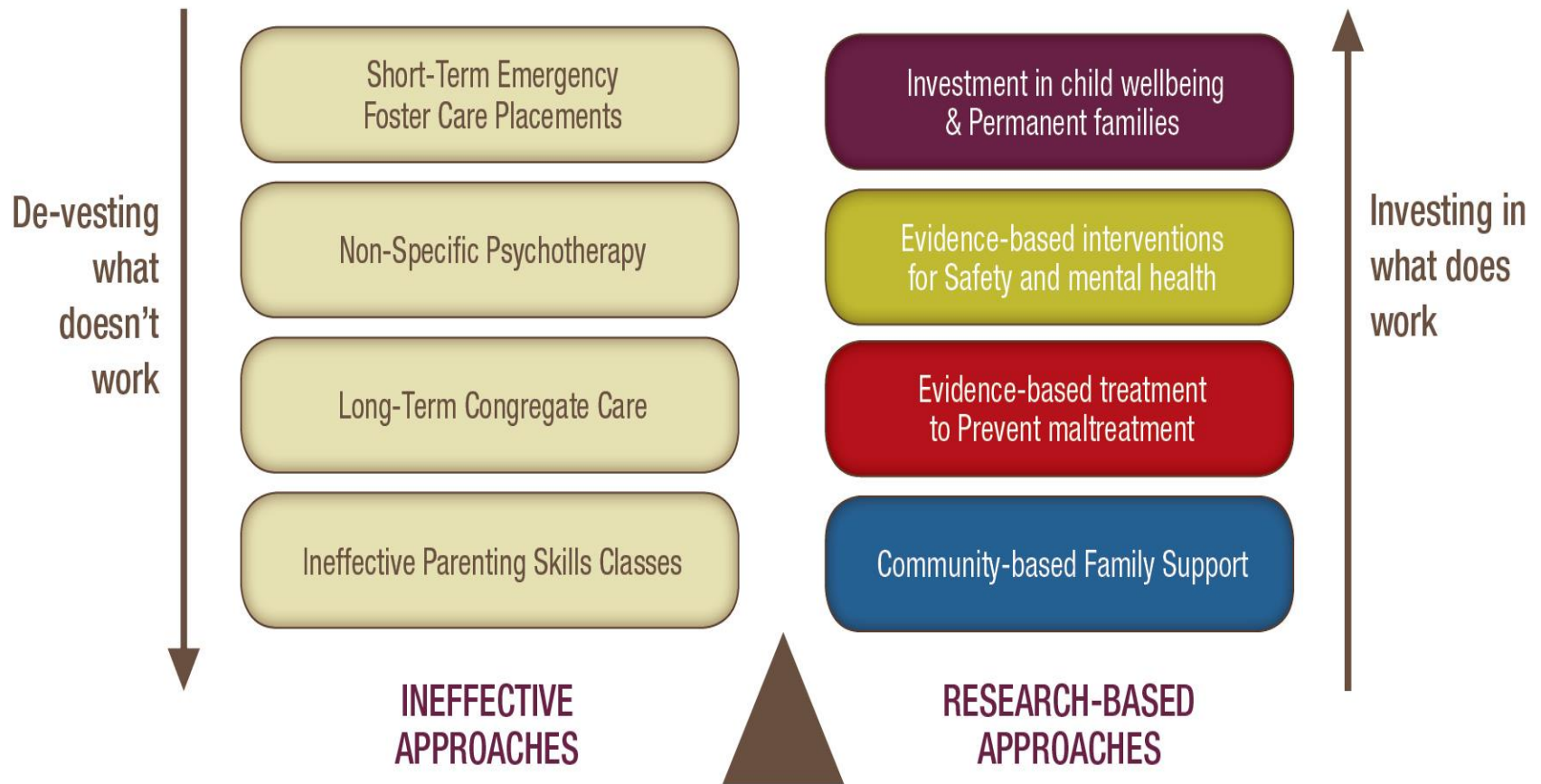
The major federal funding source for foster care is **not aligned** with good practice or outcomes.

- It is triggered when a child **enters out-of-home care**.
- It is tied to an outdated eligibility program.
- It does not promote the integration of well-being with work to promote **safety** and **permanency**.

Aligning Child Welfare Funding With Results

- The child welfare agency is just one piece of the child welfare system.
- Federal funding silos tie the hands of both the child welfare agency and the child welfare system.
 - Funding influences what the system offers vulnerable children and families.
 - Availability of needed services will impact decisions regarding what is in the best interest of a child.
 - Year to year budgeting offers no predictability.

Shifting Resources to **Support What Works**



Investing savings to bridge from ineffective to effective practices

Federal Momentum: What are the opportunities now?

- Hearings and proposals in Congress on changes to federal financing of child welfare. Potential for bipartisan child welfare legislation this fall.
- States interest in child welfare waivers and interest in use of other financing tools contributing to informing this federal discussion.
- President Obama's FY2016 Budget proposed a number of new proposals related to child welfare financing including
 - Reimbursement for prevention and post-placement services
 - Increased oversight of congregate care
 - Demonstration program to address over-prescription of psychotropic medication
 - New resources for tribal child welfare

What can you do as State legislators?

1. Actively participate in the governance and oversight of your child welfare system.
2. Define what success looks like for you in your state and community. What are the desired outcomes?
3. Align child welfare system activities with stated outcomes.
4. Evaluate your state's workforce and workforce turnover.

Improving Outcomes for Children: Questions to Consider

- How closely are agency objectives aligned with desired outcomes for children, families and communities?
- Do the accountability measures required of an agency actually increase the time that social workers spend away from families?

Improving Outcomes for Children: Questions to Consider

- Do we use data to identify who is at risk and how best to address their needs?
- Do we create policy based on what works for those at risk?

Providing Leadership for a Community Response

- A community's response should not be limited to its child protection agency.
- Other agencies - health, mental health, domestic violence, substance abuse, housing, education, law enforcement – are critical.
- You are positioned to direct and encourage that agencies work together.



SAFE STRONG SUPPORTIVE

casey family programs

2020:
Building
Communities
of Hope