



**Advancing Student Lives.  
Powering The Nation.**

 **Graduation  
Alliance™**

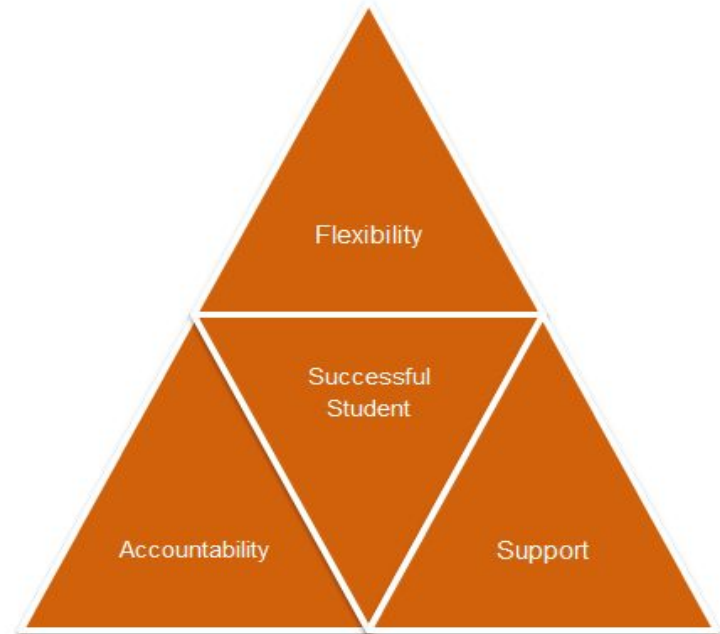


- **Dropout Recovery**
- **Attendance Recovery**
- **Adult Workforce Diploma**



# Principles of Dropout Recovery

- **Flexibility**
  - 24/7 online modality
- **Accountability**
  - Asynchronous
  - Not self- paced
- **Support**
  - Barriers
  - Pace and progress



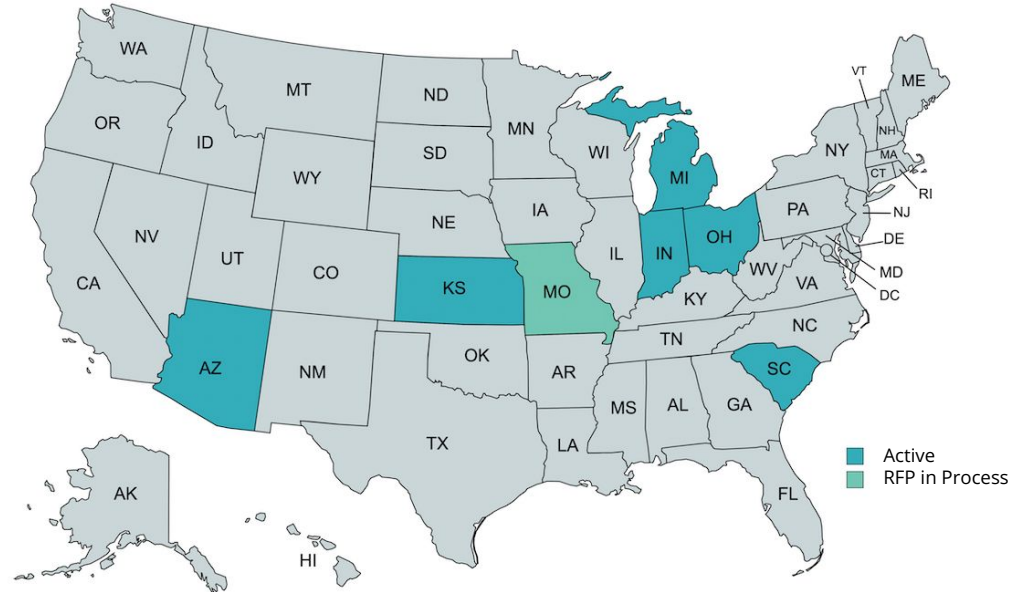
# Adult Dropout Population

- **31 million adults without a high school diploma**
- **New population of displaced adults without high school degree**
- **80% of students dropout of high school for non-academic reasons**
- **Workforce focused**
  - **Employability skills**
  - **Workforce Credentials**

- **Outcomes-Based Payment Structure**
  - **Outcomes**
    - **1 Credit**
    - **Employability Skills Certifications**
    - **Workforce Credentials aligned with state employment needs**
    - **Graduation**
- **Open Provider Space**
  - **Online, in-person, hybrid modalities**
  - **Regional accreditation**
- **Accountability**
  - **Minimum 50% graduation rate**
  - **Maximum average spend of \$7,000 per graduate**

# State Adult Workforce Diploma Programs

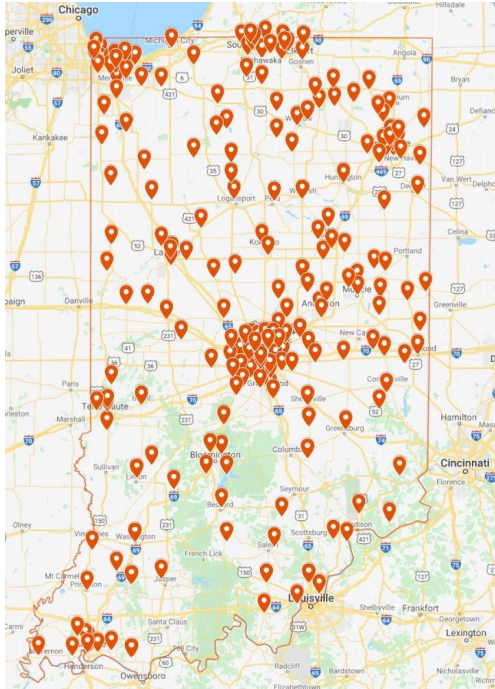
- **Ohio - Ohio Department of Education**
- **Michigan - Department of Labor and Economic Opportunity**
- **Indiana - Governor's Workforce Cabinet**
- **Kansas - Central Plains School District**
- **South Carolina - Department of Commerce**
- **Arizona - Department of Education**
- **Missouri - RFP Released November 2022**



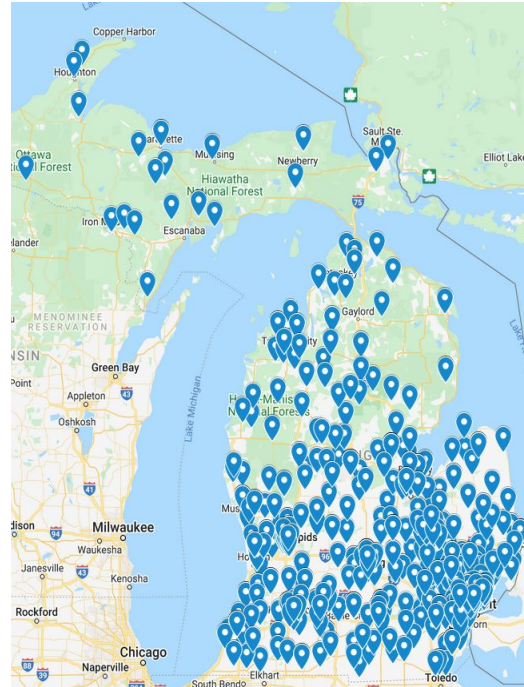


# Enrollment – Geographic Distribution

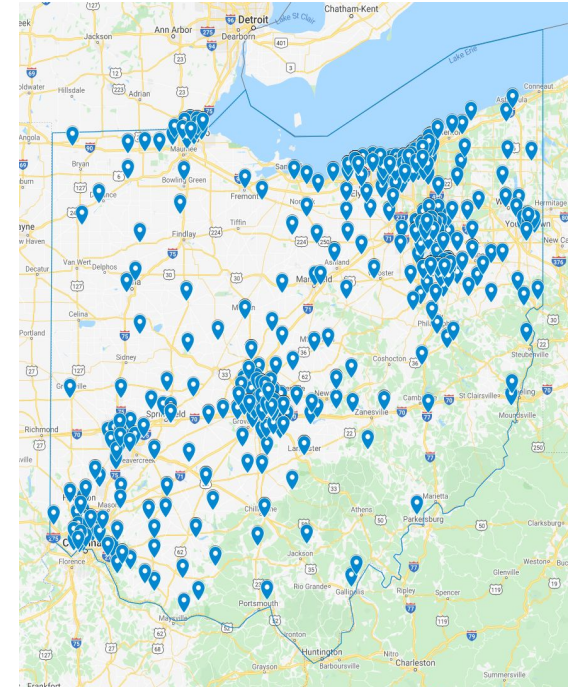
## Indiana



## Michigan



## Ohio





# Adult Learner Demographics - MI



Female 83%

Male 17%

Black or African American 53%

White or Caucasian 33%

Multiracial or Biracial 7%

Hispanic or Latino 4%

Native American or Alaskan 1%

Native

Asian or Pacific Islander 1%

A race/ethnicity not listed 1%

# Workforce Outcomes – Michigan



## WORKFORCE OUTCOMES

Results from surveying Graduation Alliance's adult graduates in Michigan  
(42% Response Rate)



**68%**

Work In High Demand Field

(Healthcare, Construction, Transportation, Manufacturing)



From **30%** ↑ To **46%**

Increase in Health Insurance Coverage



**28%**

Enrolled in Post-Secondary Education

(20% Completed)



From **56%** ↑ To **79%**

Increase in Labor Market Participation



**82%**

Better Job or Raise Post-Graduation



Average Increase in Hourly Wage – Program Start vs. Post Graduation

# Workforce Outcomes - Indiana



## WORKFORCE OUTCOMES

Results from surveying Indiana graduates six months post-graduation. (55% Response Rate)



**42%**

Work In High Demand Field

(Healthcare, Construction, Transportation, Manufacturing)



From **35%** ↑ To **52%**

Increase in Health Insurance Coverage



**6%**

Enrolled in Post-Secondary Education

(28% Completed)



From **51%** ↑ To **53%**

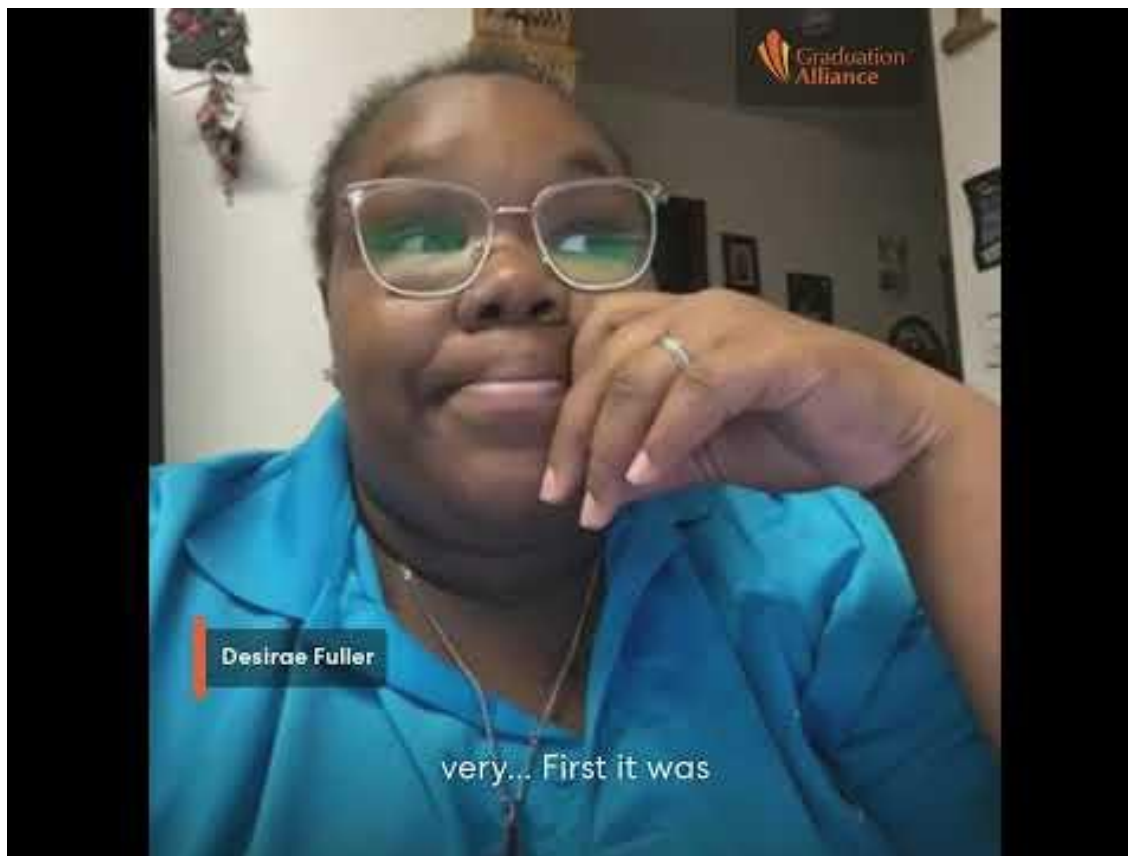
Increase in Labor Market Participation



**79%**

Better Job or Raise Post-Graduation

# South Carolina Graduate Story





**QUESTIONS?**

Contact :

[Kristian.Starner@GraduationAlliance.com](mailto:Kristian.Starner@GraduationAlliance.com)

[Erin.Luper@GraduationAlliance.com](mailto:Erin.Luper@GraduationAlliance.com)



**Graduation  
Alliance™**